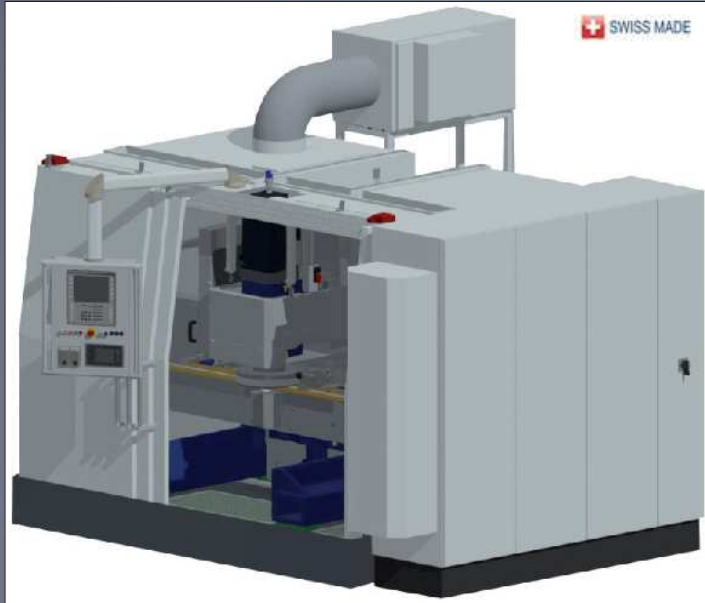


# ISOLDE 500/500

Continuous through feed grinder equipped with  
1 vertical and 1 horizontal spindle

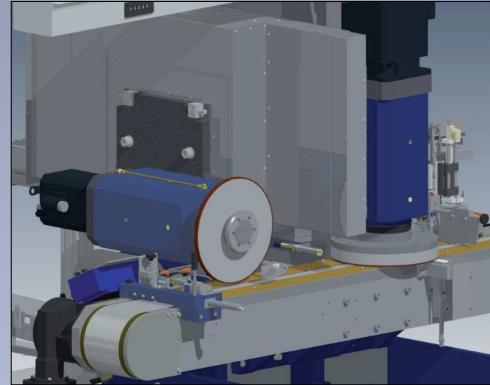


Grinding direction from right to left

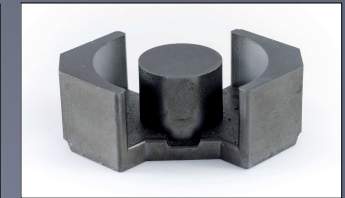
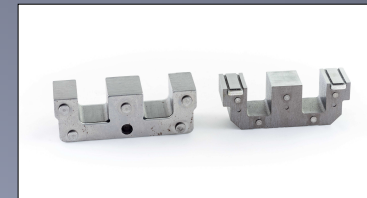
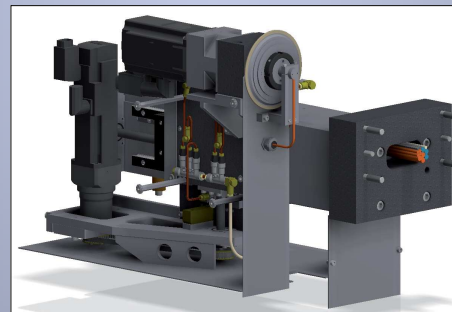
## Performances

- Resolution 0.001 mm
- High performance spindles, direct drive
- Modular rigid frame of grey cast iron combined with prestressed concrete
- Measurement and automatic servo
- Additional brushing module
- Automatic, semi-automatic or manual loading

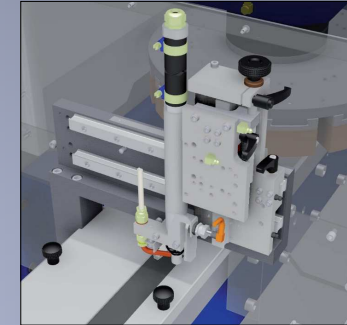
## Spindle



## Dressing

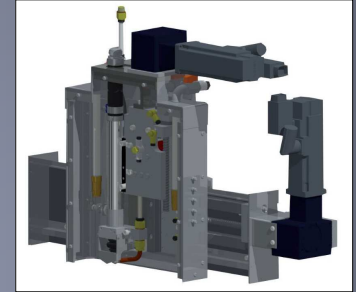


## Measurement

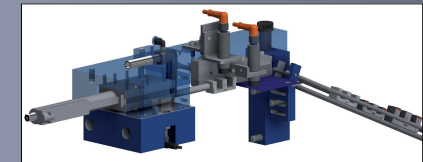


Manual

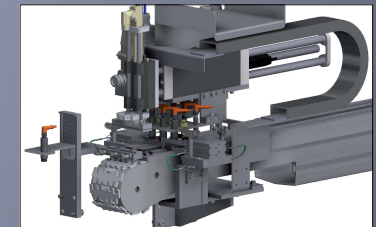
Automatic



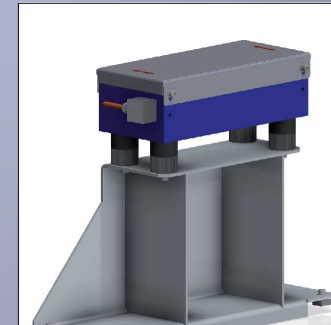
## Unloading



## Loader



## Demagnetizer



**LINEAR ABRASIVE Engineering S.A.**  
Bellevue 5  
2074 Marin / Schweiz  
Tel.: +41 (0)32 753 36 33 Fax: +41 (0)32 753 21 69  
E-Mail: [commercial.center@linear.ch](mailto:commercial.center@linear.ch)



LINEAR ABRASIVE

## Technical specifications

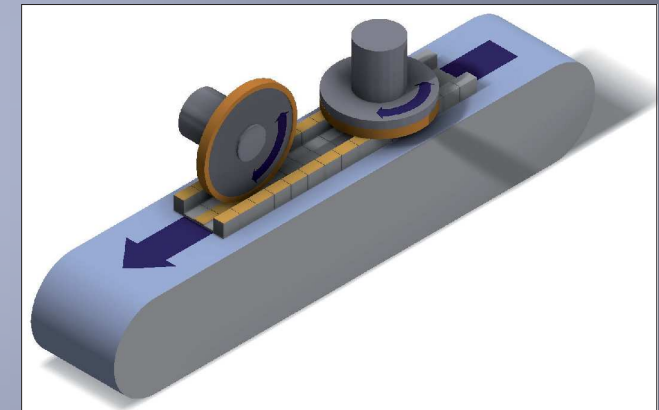
<b>Number of spindles</b>	<b>2</b>	<b>Abrasive tools</b>	<b>CBN/diamond/Al2O3</b>
<b>Spindle (mm)</b>	<b>ø200x500</b>	<b>Grinding wheel (mm)</b>	<b>ø500 / ø400</b>
<b>Z-axis infeed (mm)</b>	<b>120</b>	<b>Infeed (mm/min)</b>	<b>0 - 6000</b>
<b>Direct spindle drive (rpm)</b>	<b>0 - 4000</b>	<b>Electrical control</b>	<b>Siemens S7/1500/TIA</b>
<b>Power (kW)</b>	<b>2x28</b>	<b>Total weight (t)</b>	<b>5 - 7</b>
<b>Width of machinable parts max. (mm)</b>	<b>170</b>	<b>Stock removal max. (mm)</b>	<b>5</b>
<b>Height of machinable parts max. (mm)</b>	<b>100</b>	<b>Resolution (mm)</b>	<b>0.001</b>

### Technology 2VH:

Continuous through feed surface and profile grinder, equipped with 1 vertical spindle and 1 horizontal spindle

#### Combined operations

Highly productive method for continuous through feed machining of surfaces and profiles, using AL2O3 cup, diamond and CBN wheel. Transported by a highly resistant composite belt, held by magnetic attraction (by mask or template for parts of non-magnetic material) the parts are guided between rails and pass beneath the grinding wheel. Controlled process and part program provide optimum performance.



#### **LINEAR ABRASIVE Engineering S.A.**

Bellevue 5

2074 Marin / Schweiz

Tel.: +41 (0)32 753 36 33 Fax: +41 (0)32 753 21 69

E-Mail: [commercial.center@linear.ch](mailto:commercial.center@linear.ch)



LINEAR ABRASIVE